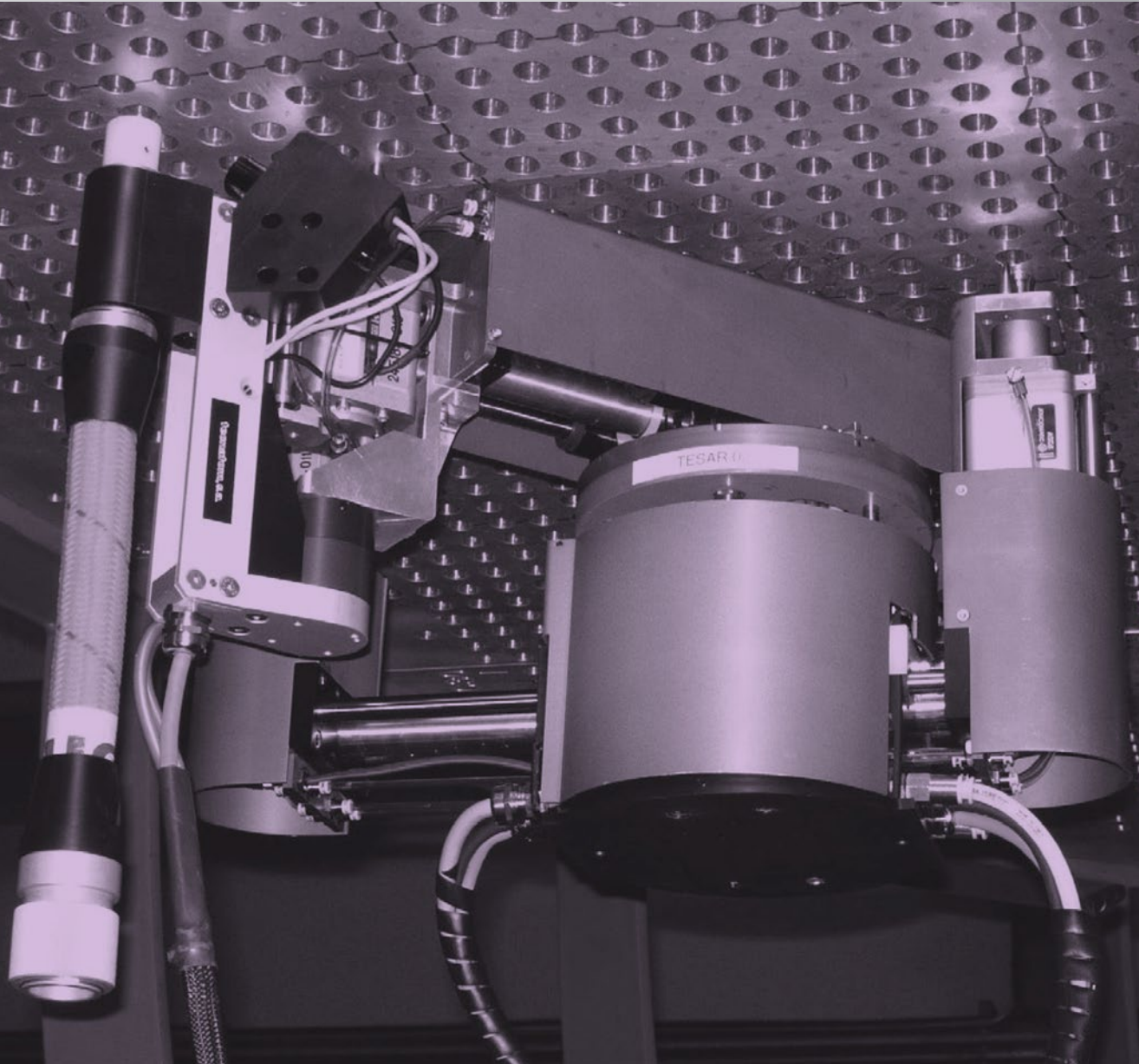


Ready for the future,
caring for the customer



Teddy & SirioNet

Software Suite for Eddy
Current Tubing Inspection

 **tecnatom**
www.tecnatom-ndt.com

CE

Teddy & SirioNet Software Suite for Eddy Current Tubing Inspection

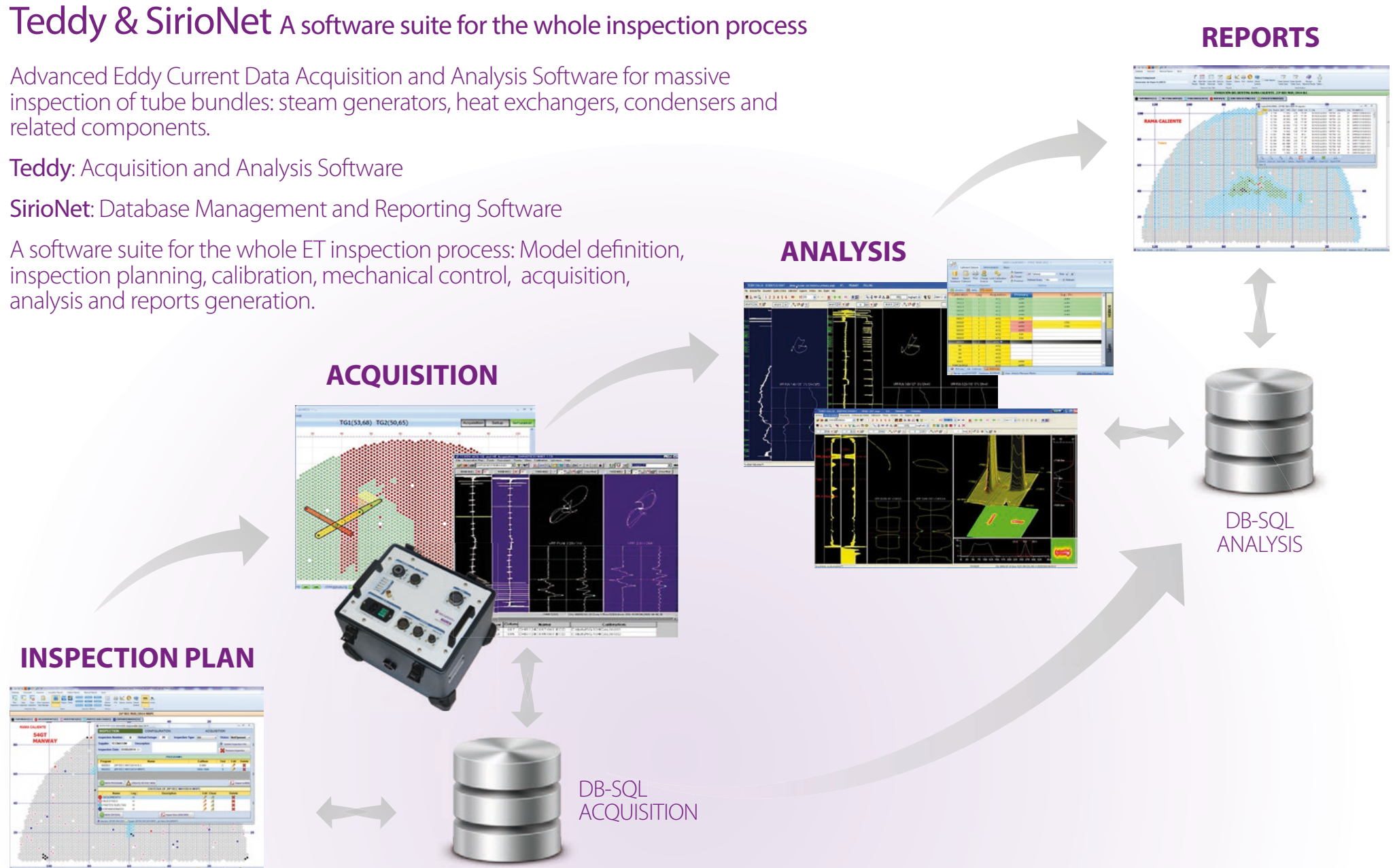
Teddy & SirioNet A software suite for the whole inspection process

Advanced Eddy Current Data Acquisition and Analysis Software for massive inspection of tube bundles: steam generators, heat exchangers, condensers and related components.

Teddy: Acquisition and Analysis Software

SirioNet: Database Management and Reporting Software

A software suite for the whole ET inspection process: Model definition, inspection planning, calibration, mechanical control, acquisition, analysis and reports generation.

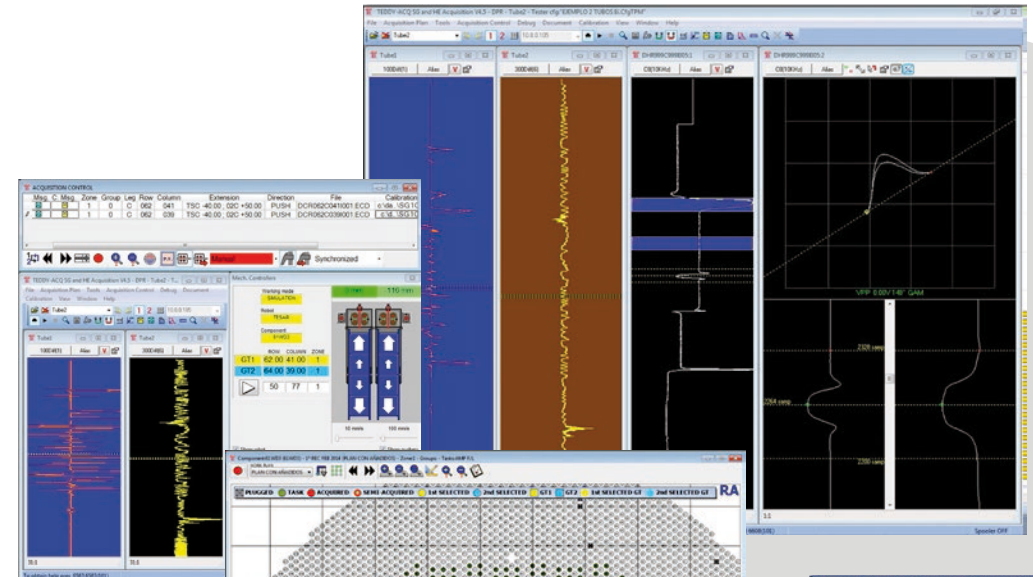




Eddy current acquisition software for tubing inspection

Teddy-ACQ is an application for mechanical control, calibration, and acquisition of large volume of tubes. Manual or automatic execution of inspection plans.

- Works with ETbox and Teddy+ instruments and mechanical systems (pushers and robots).
- Different probes and techniques supported: Bobbin, Profile, RFT, MRPC and Array. Compatible with several formats of EC data files.
- Connection with SirioNet database and compatible with inspection plans, tube mapping, model components and procedure files (indication code lists, macros, etc.) generated by SirioNet software.
- Data display in real time: Strip-chart, Lissajous, C-Scan, and 3D views. Customizable graphical configuration.
- Configuration and calibration of instrument. Digital filters.



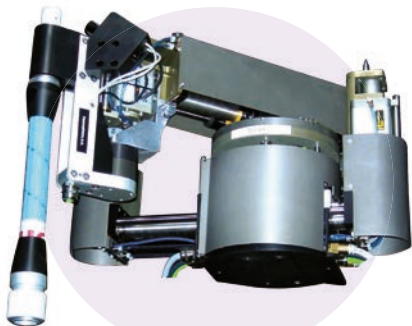
RPC probe



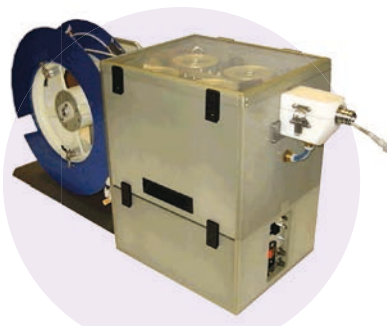
Bobbin probe



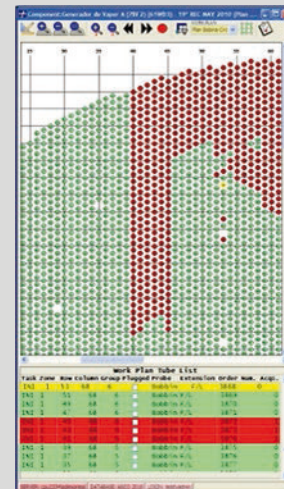
Robot



Pusher probe



ETbox Instruments

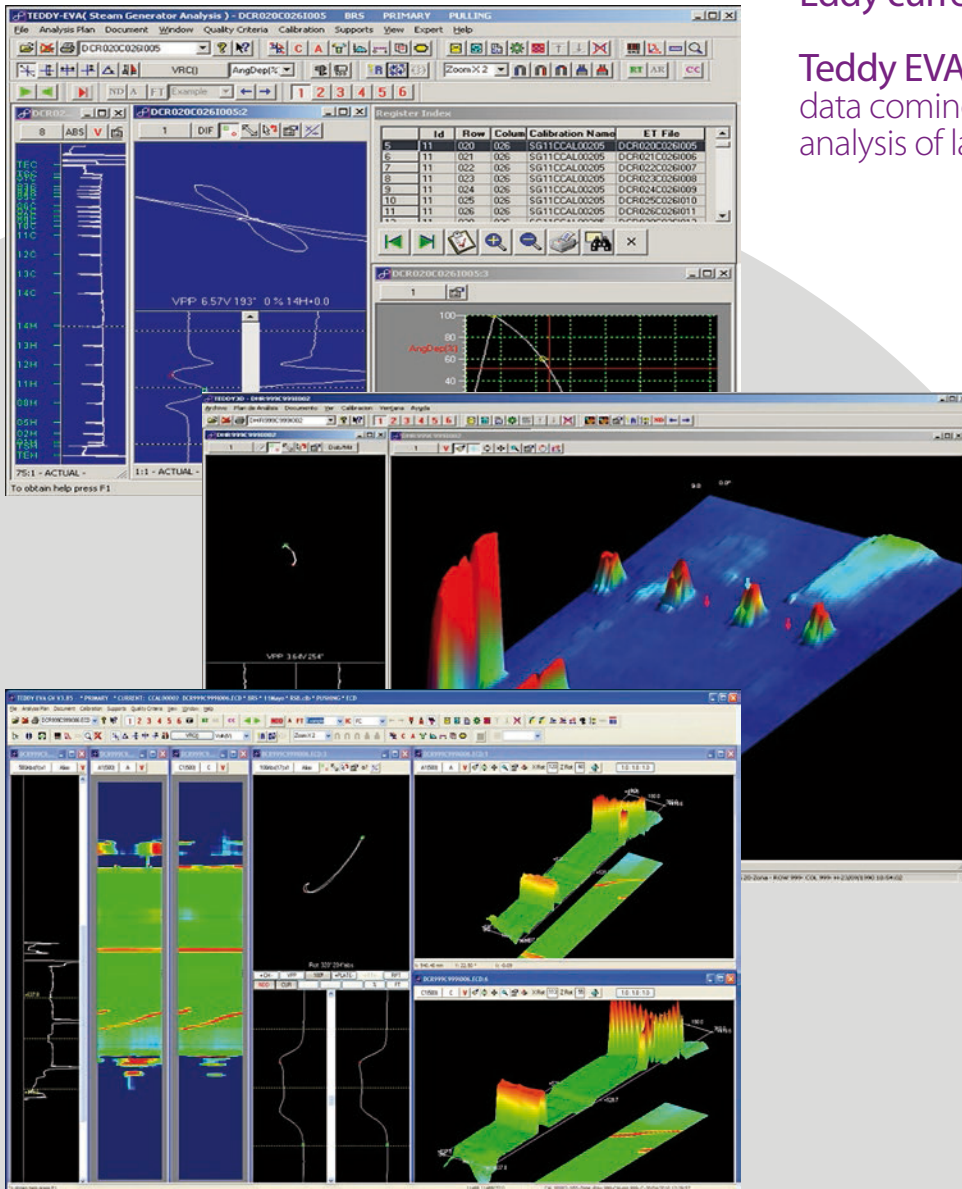


Teddy-EVA-SG

Eddy current analysis software for steam generators tubing inspection

Teddy EVA-SG is an application for manual or automatic analysis of Eddy Current data coming from Steam Generators inspections. Efficient, reliable and user-friendly analysis of large volume of data.

- Different techniques and probes supported: Bobbin, MRPC, Array, Bobbin Profile and Multicoil Profile.
- Compatible with several formats of EC data files.
- Connection with historical data. Visualization of signals from different acquisition files. Supervision and Resolution of analyst reports.
 - Manual or automatic calibration. Signal processing tools: mixed, multi-mixed, duplicated and filtered channels.
 - Automated analysis of bobbin coil probe data.
 - Sizing tools. Automatic crack mapping.
 - Data Quality Verification compatible with EPRI Guidelines.
- Automatic detection of Steam Generators structures (including VVER models). Compatible with Steam Generators models generated by SirioNet Tubesheet Editor.
- User defined indications table with automatic and customizable consistency checks.
- Several EC data views (Stripchart, Lissajous, C-SCAN, 3D-View, C-Scanchart, Z-SCAN). Customizable graphical configuration.

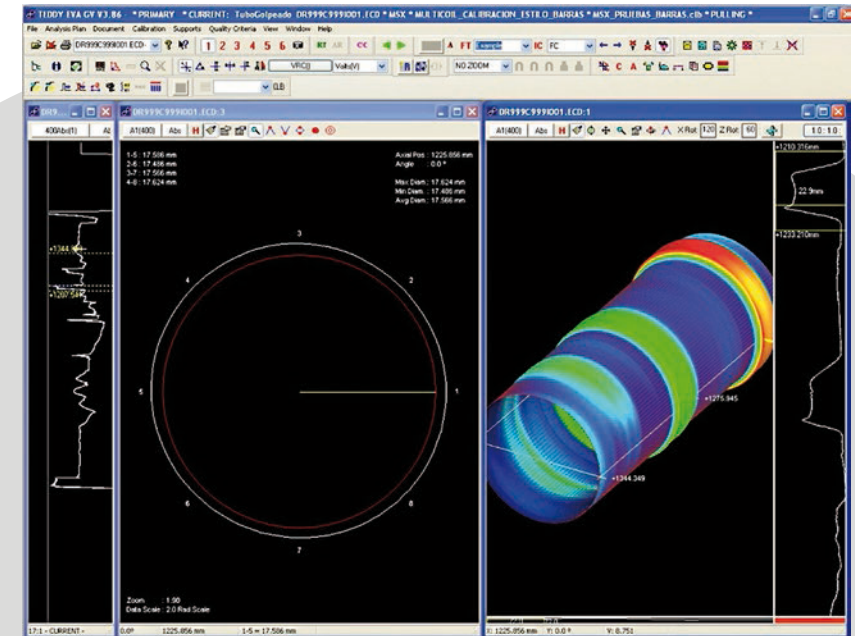


Ready for the future,
caring for the customer



OPTIONS

- **Bobbin.** Basic module including tools, views, dialogs, etc. for standard EC analysis of bobbin coil probe data.
- **MRPC.** Module integrating three-dimensional interfaces and tools for the analysis of signals acquired using rotating probe.
- **Array.** Module specialized for the analysis of array probe data. Three-dimensional views and tools. Capability of managing large number of channels and coils.
- **Resolution.** Module including tools and dialogs for the resolution of discrepancies among different analysis roles (Primary, Secondary, etc.).
- **Automatic Analysis:** Module for the automated detection, classification and characterization of defects. Automated reports generation.
- **Profilometry.** Module including tools and views typical of the tube profile technique.



This block contains several screenshots of the software's internal modules:

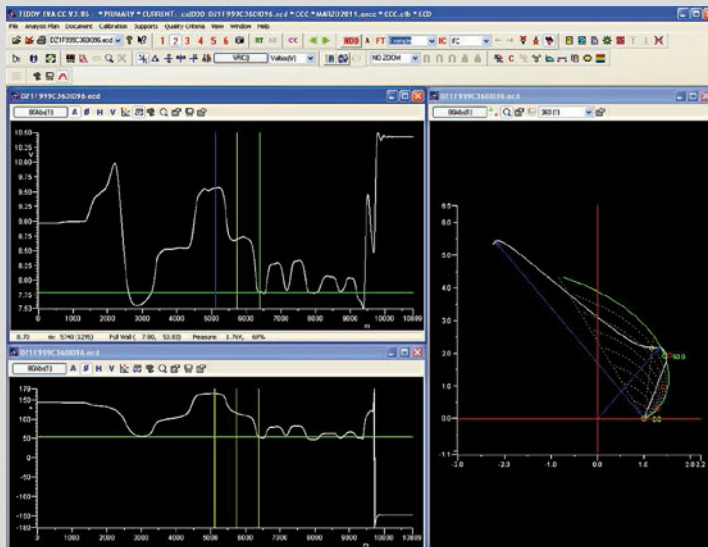
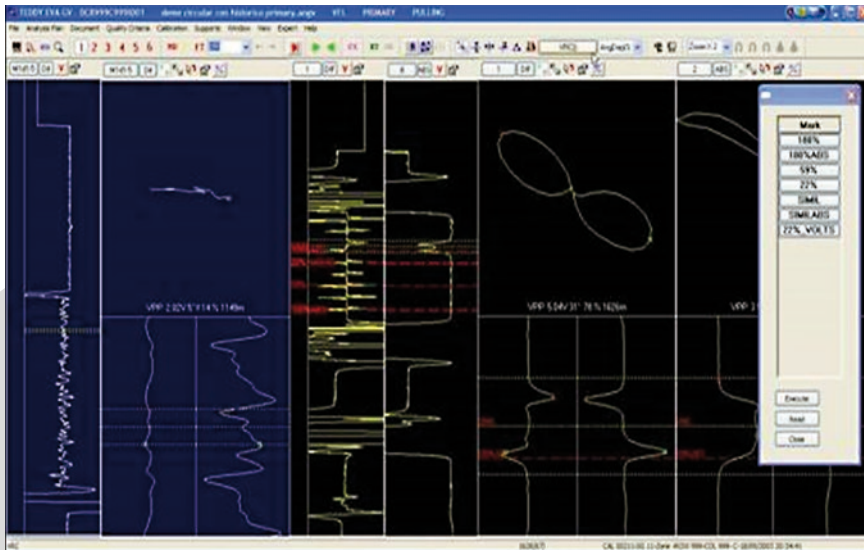
- CALIBRATION CONTROL:** A window showing a list of channels with columns for 'Alias', 'Type', '% Screen', 'Phase', and 'Voltage'. It includes a 'Calibrate' section with 'Values' and 'Reference Channel' options.
- Resolution Plan:** A window titled 'TEDDY-RIS (Resolution) - D491061C0571007.ECD - SECONDARY' showing a toolbar and various analysis parameters.
- History of Results:** A table listing analysis results with columns for 'Id', 'Leg', 'Exten', 'Row', 'Column', 'Support', 'Distal', 'Type', 'Voltage', 'Phase', 'Channel', and 'Val'. It includes a 'Current Discrepancies Report' section.
- Discrepancies Calibration Index:** A table showing calibration data with columns for 'Calibration Name', 'Calibrd', 'Calibrd M', 'L', 'S', 'C', 'R', 'A', 'V', 'M', 'I', 'T', 'E', 'F', 'I', 'L', 'E'.

Teddy-EVA-HE

Eddy current analysis software for heat exchangers tubing inspection

Teddy EVA-HE is an application for analysis of Eddy Current data coming from inspections of Condensers, Heat Exchangers, Thermal Solar Power Plant and similar components. Efficient, reliable and user-friendly analysis of large volume of data.

- Different techniques and probes supported: standard EC analysis (Bobbin coil) and Remote Field Testing (RFT).
 - Several EC data views (Stripchart, Lissajous, RFT views). Customizable graphical configuration.
 - Compatible with several formats of EC data files (ECD, MIZ and EDDYNET).
 - Connection with historical data. Visualization of signals from different acquisition files. Supervision of the analyst reports.
 - Manual or automatic calibration. Different process channels: mixed, multimixed, duplicated and filtered channels. Signal processing and digital filtering tools.
 - Automatic structures detection. Compatible with SirioNet Tubesheet Editor models of Heat Exchanger, Condensers, Thermal Solar Power Plant, etc.
 - User defined indications table with automatic and customizable consistency checks.



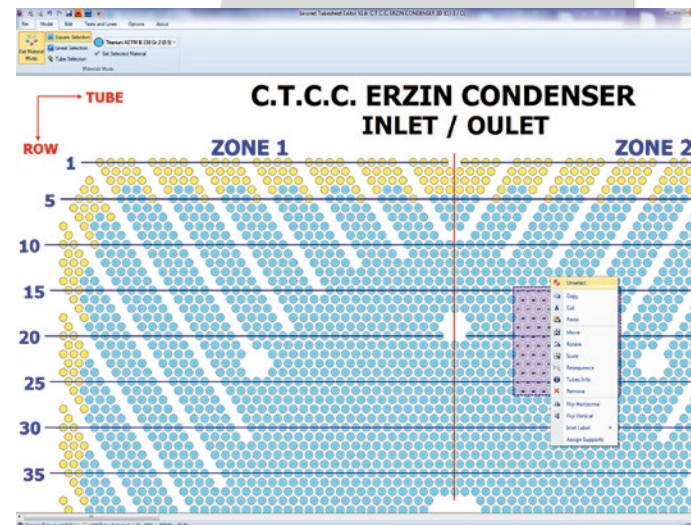
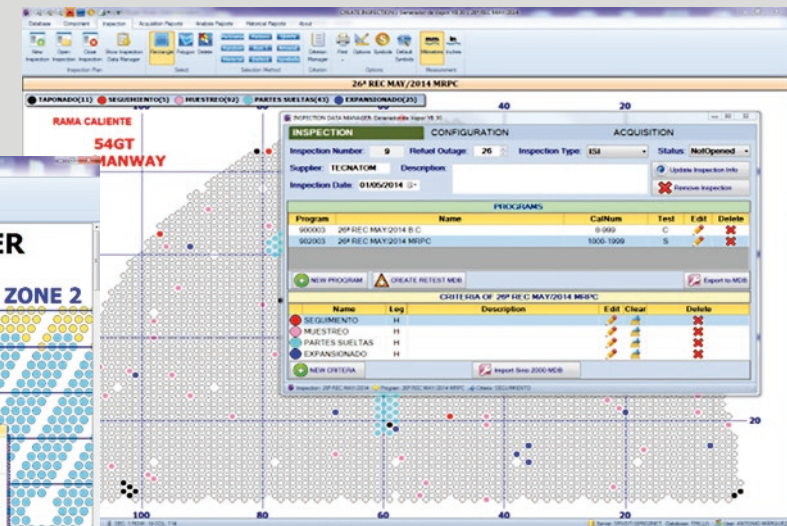
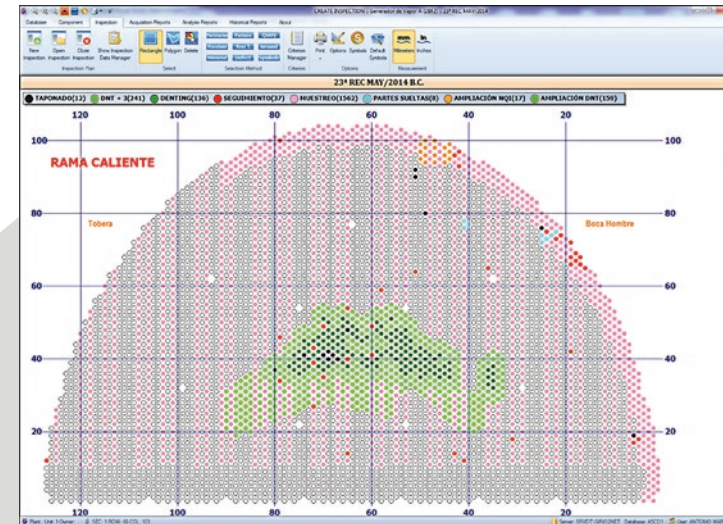


Data management software for tubing inspection

SirioNet is a suite for tube mapping, data management and reporting software applications for inspections of Steam Generators, Condensers, Heat Exchangers, Solar Thermal Power Plants and similar components.

The main capabilities are:

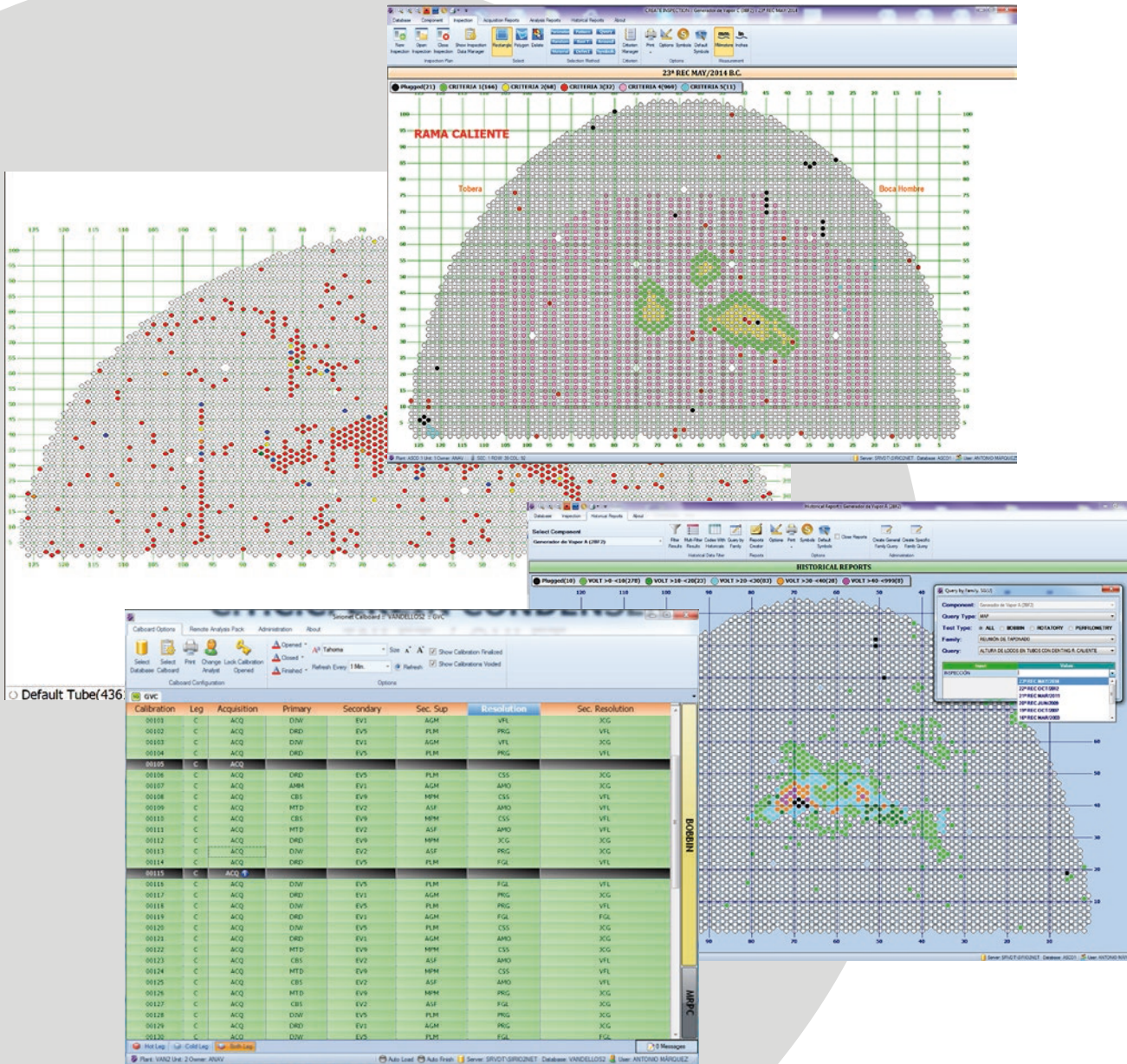
- Definition of inspection plans.
- Creation of component maps (global geometry, tube structures, etc.).
- Coordination and tracking of acquisition and analysis tasks.
- Management of previous inspections results.
- Consistency checks of analysis results.
- Maps and reports generation.
- Fast, efficient and reliable management of large volumes of data.
- SQL server database or local MDB files are supported.



SQL DATABASE OPTION

Modules included:

- SirioNet Tubesheet Editor
 - SirioNet Plan Manager and Reports
 - SirioNet Calboard
- SQL server database.
 - Creation and management of users database.
 - Definition of inspection plans and tasks. Intuitive and user-friendly tools and tubes selection.
 - Creation of component maps (global geometry, tube structures, etc.).
 - Control flow and tracking of inspection status. Coordination of acquisition and analysis tasks. Real-time upgrades and changes of inspection plan.
 - Extensive range of symbols for customizing tubular maps, report lists and graphics.
 - Management of previous inspection results. Online consistency checks of analysis results. Comparison of different roles results and discrepancies generation.
 - Reports and maps generation (PDF and Office format). Customizable queries, filters and report configuration.



Ready for the future,
caring for the customer

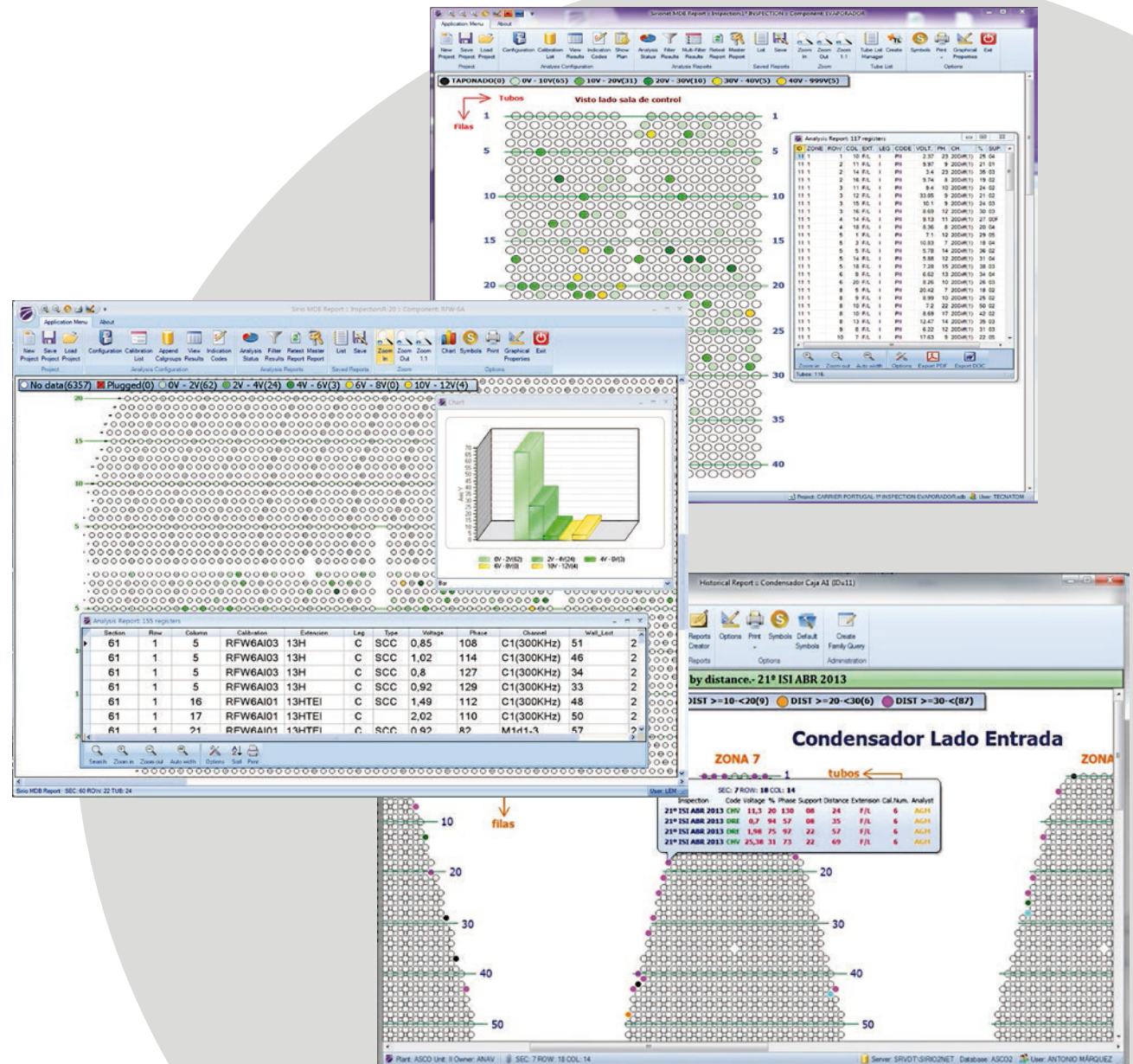


LOCAL DATABASE OPTION

Modules included:

- SirioNet Tubesheet Editor
- SirioNet MDB Reports

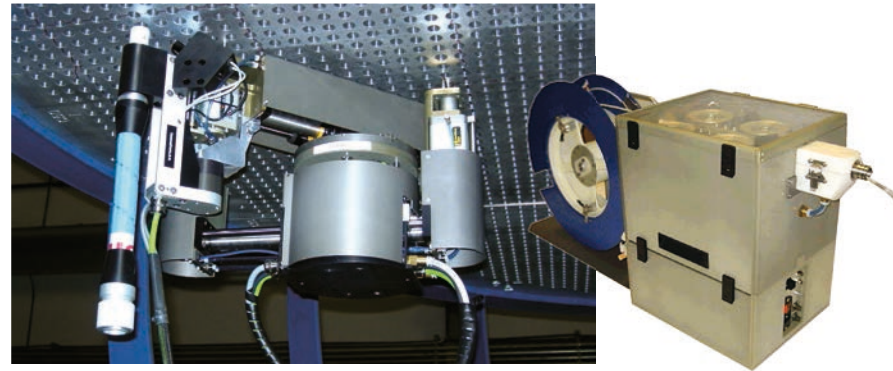
- Works with MDB files compatible with Teddy software. Optimized for inspection of Heat Exchangers, Condensers, Solar Thermal Power Plant, etc.
- Only one MDB file includes all the information: inspection plan, information analyzed tubes, reports. Easy to share between several partners.
- Definition of inspection plans and tasks. Intuitive and user-friendly tools and tubes selection.
- Control flow and tracking of inspection status. Real-time upgrades and changes of inspection plan.
- Extensive range of symbols for customizing tubular maps, report lists and graphics.
- Management of previous inspection results. Online consistency checks of analysis results.
- Reports and maps generation (PDF and Office format). Customizable filters and report configuration.



APPLICATION FIELDS

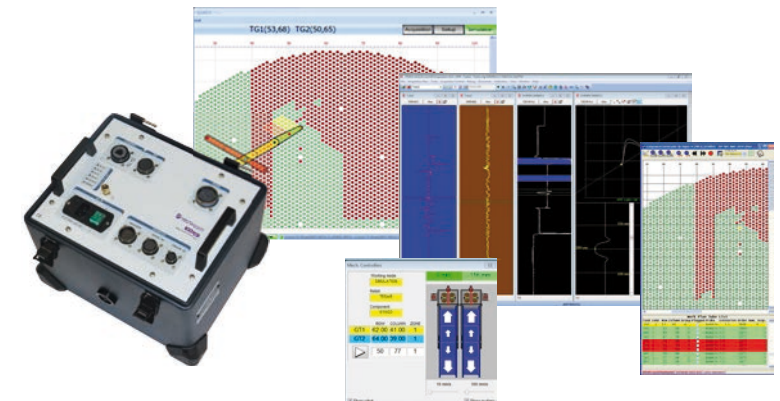
POWER GENERATION

Tubing inspection for steam generators, heat exchangers and condensers.



Ordering Information

REFERENCE		OPTIONS	DESCRIPTION
TEDDY ACQ		BASIC	BASIC
		MDB	LOCAL DATABASE
		SQL	SERVER DATABASE
TEDDY EVA	HE (HEAT EXCHANGERS)	BOBBIN	BOBBIN ANALYSIS
		RFT	REMOTE FIELD TESTING
	SG (STEAM GENERATORS)	BOBBIN	BOBBIN ANALYSIS
		MRPC	MRPC ANALYSIS
		RESOLUTION	RESOLUTION ANALYSIS
		AUTO-BOBBIN	AUTOMATIC ANALYSIS
	PROFILES	PROFILES ANALYSIS	
	ARRAY	ARRAY ANALYSIS	
SIRIONET	MDB LOCAL DATABASE	TE	TUBESHEET EDITOR
		MR	MDB REPORTS
	SQL SERVER DATABASE	PM	PLAN MANAGER & REPORTS
		CB	CALBOARD



Tecnatom, S.A.
Av. Montes de Oca, 1
28703, San Sebastián de los Reyes / Madrid- Spain

www.tecnatom-ndt.com

